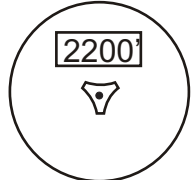
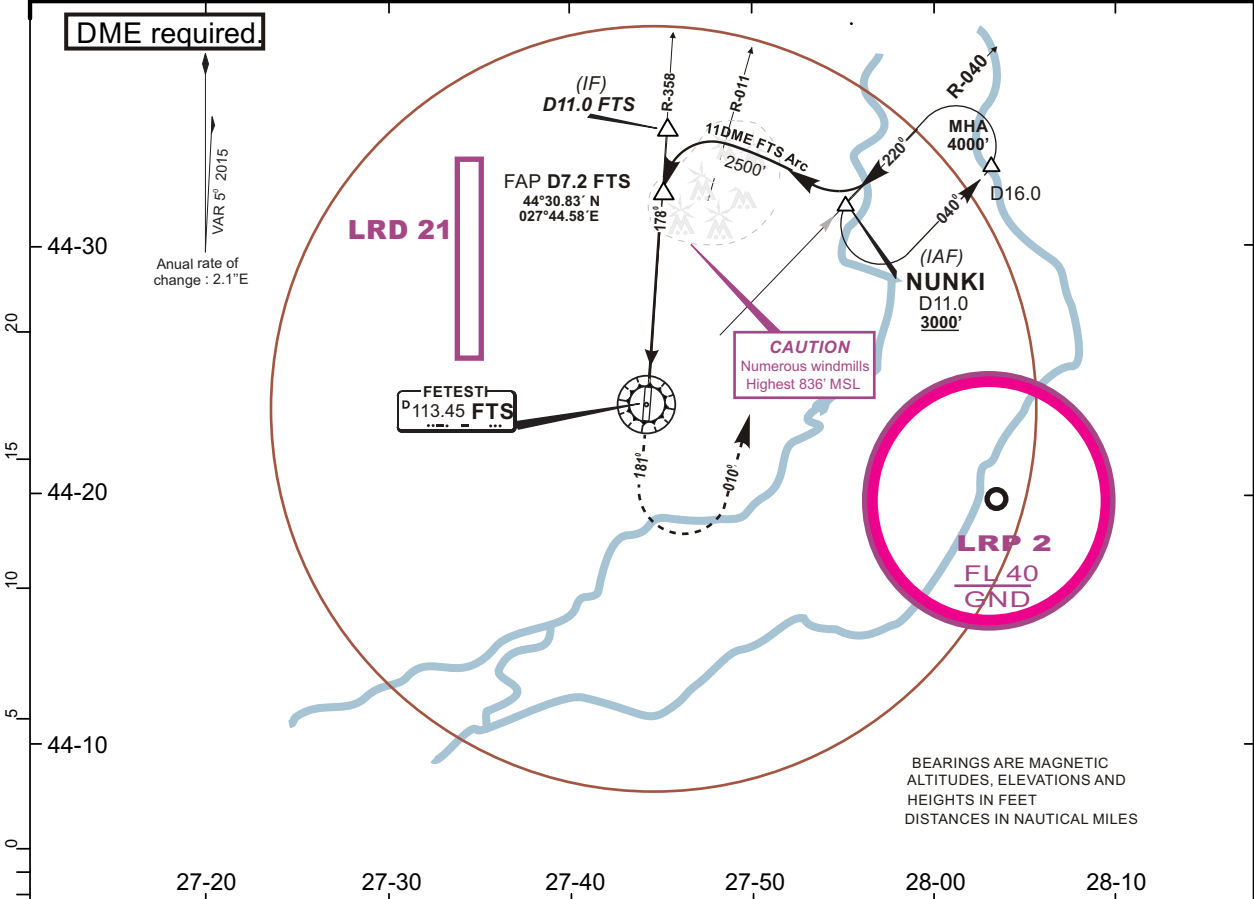
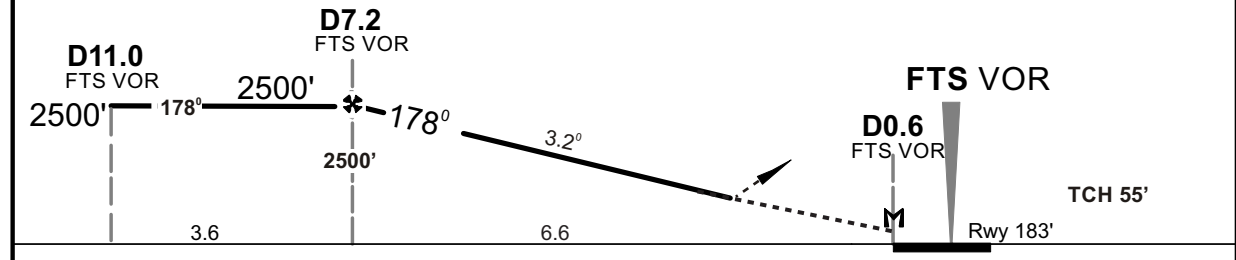



ATIS 122.525		RUBIN Approach 123.375/309.625		RUBIN Tower 119.325/232.850		
VOR FTS 113.45	Final Apch Crs 178°	Minimum Alt. D7.2 FTS VOR 2500' (2327')	DA(H) 610'(427')	Apt Elev 183'	Rwy 183'	
<b>MISSED APPROACH:</b> Climb on RWY HDG to 1500' then turn left Hdg 010° climbing to 3000' to intercept R-040 FTS VOR						

Alt Set: hPa      Rwy Elev: 7 hPa      Trans level: By ATC      Trans alt: 4000'



	27-20	27-30	27-40	27-50	28-00	28-10
FTS DME	7.0	6.0	5.0	4.0	3.0	2.0
ALTITUDE	2432'	2091'	1750'	1410'	1069'	728'



Gnd speed-Kts	70	90	100	120	140	160		1500' ↑	Hdg 010° 3000' Lt	<b>R-040</b> FTS VOR
Descent Angle	3.2°	396	510	566	679	793				
MAP at D0.6 FTS VOR										

	<b>Standard.</b>				<b>STRAIGHT-IN LANDING RWY 18</b>				<b>CIRCLE-TO-LAND</b>				
	DA(H) <b>610'</b> (427')												
					ALS out				Max Kts	MDA(H)		VIS	
A	RVR 1200m				RVR 1700m				100	<b>685'</b> /(502')		1600m	
B	RVR 1300m				RVR 1800m				135	<b>685'</b> /(502')		2000m	
C	RVR 1500m				RVR 2200m				180	<b>785'</b> /(602')		2400m	
D	RVR 1800m				RVR 2500m				205	<b>800'</b> /(617')		4800m	
E	RVR 1800m				RVR 2500m				250	<b>800'</b> /(617')		4800m	